



GMT MONTHLY MEMBERSHIP PROGRESS REPORT

Results as of: 9/30/2019

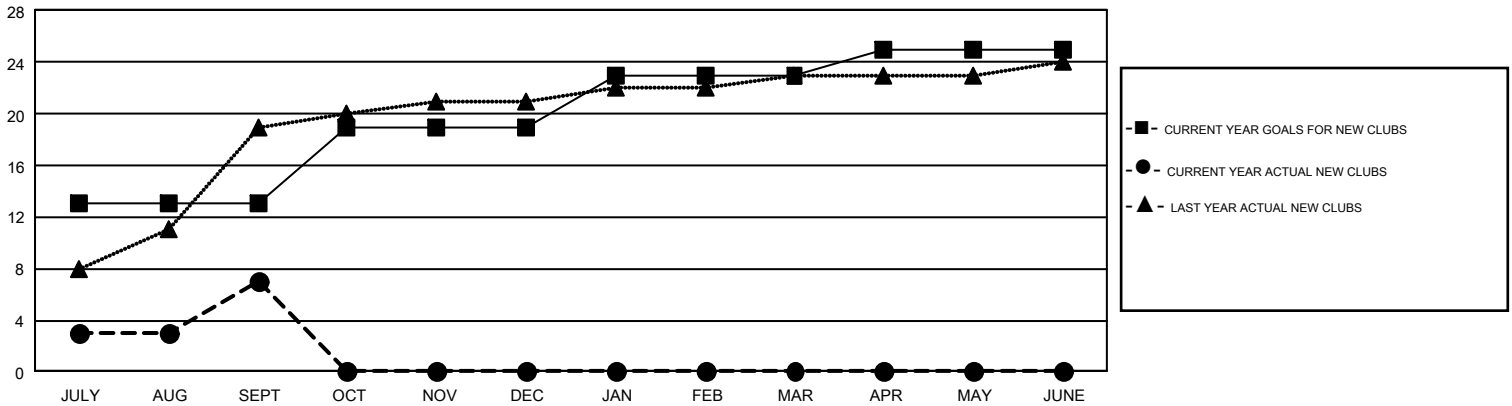
GMT Constitutional Area 6, Group O

GMT: OPEN

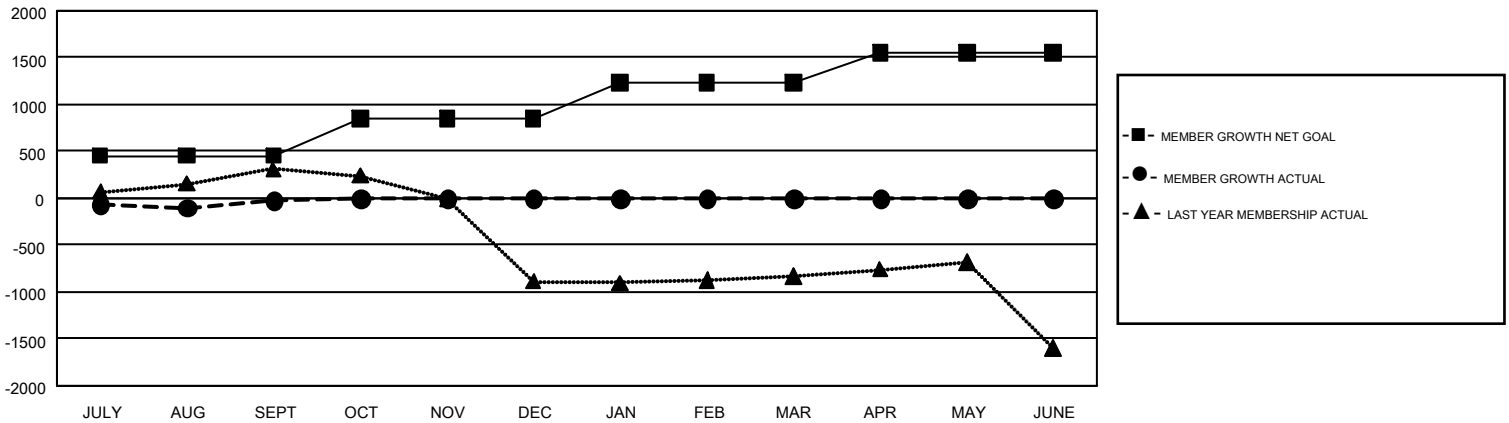
REPORT DOES NOT INCLUDE CLUBS IN UNDISTRICTED AREAS.

Clubs				Members			
RESULTS FOR 2019-2020				RESULTS FOR 2019-2020			
QUARTER	NEW CLUB GOAL	NEW CLUBS	DROPPED CLUBS	QUARTER	MEMBER GROWTH NET GOAL	MEMBER GROWTH ACTUAL	DROPPED MEMBERS ACTUAL (including transfers)
JULY/AUG/SEPT	13	7	0	JULY/AUG/SEPT	450	461	404
OCT/NOV/DEC	6	0	0	OCT/NOV/DEC	400	0	0
JAN/FEB/MAR	4	0	0	JAN/FEB/MAR	380	0	0
APR/MAY/JUNE	2	0	0	APR/MAY/JUNE	320	0	0

GOALS AND ACTUAL NEW CLUBS CUMULATIVE



GOALS AND ACTUAL MEMBERS CUMULATIVE



DROPPED CLUBS: 0	80 CLUBS OF 370 ADDED 1 OR MORE NEW MEMBERS	<u>GENDER DISTRIBUTION</u>	
<u>DROPPED MEMBERS</u>		MALE	10,725 (65.64%)
DECEASED	7	FEMALE	5,614 (34.36%)
CLUB CANCELLED	0	TOTAL FAMILY UNIT MEMBERS 9,768	
OTHER	397	FAMILY MEMBERS PAYING HALF DUES 5,505	
TOTAL	404		

[CLICK HERE FOR CUMULATIVE MEMBERSHIP DATA](#)